

July

2025

Newsletter

In This Issue

July
Birthdays
In Our Prayers
July Worship Assistants

Save the Date

July 1
Elders' Meeting,
5:30 P.M.

July 4
INDEPENDENCE DAY

July 20
Lucky Finn Sunday
honoring Tinley Doran

July 22
**DEADLINE for AUGUST
Newsletter**

July 27
DUAL PARISH PICNIC
following worship service,
Stew Brown Park, Mesa Antero.
See map on page 8.

FAITH LUTHERAN CHURCH
15440 CR 306 – PO Box 1448
Buena Vista, CO 81211
719-395-2039
faithlutheranbv.org

Pastor's Corner



Martin Luther's Seal

... Pastor's Corner Continued on Next Page

Pastor's Corner, Continued...

Martin Luther's Seal

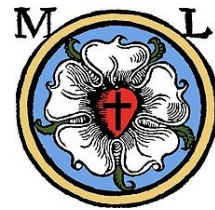
From the inside out, the black cross at the center reminds us that Jesus died to take the punishment for our sins.

The red heart reminds us of the love God has for us in sending Jesus to be our Savior. The red of the heart is also the color of the blood of Christ, shed for us and for our salvation.

The white rose helps us remember the work of the Holy Spirit, who makes us pure and holy in God's sight by bringing us to faith in Jesus and by helping us to live our lives for Him.

The sky-blue background pictures the joy of the new life God gives to all who believe and trust in Him.

Finally, the golden ring outlining the seal reminds us of our eternal inheritance—a home in heaven where we will enjoy complete joy and happiness in our Savior's presence.



Greetings in Jesus' Name,

FAITH LUTHERAN CHURCH WORSHIP SERVICE STREAMING HAS MOVED!

Please go to our Faith Lutheran Church YOUTUBE channel

- All services are on our new YOUTUBE channel.
- You can find it on our website at faithlutheranbv.org under streaming and archived services, or search for Faith Lutheran Buena Vista on YOUTUBE.
- Upcoming and archived worship services will be there.
- Please SUBSCRIBE to this channel when you get there.
- Unfortunately, no phone dialup is available with the new system.

Please check in 5 to 10 minutes early.

God bless and keep you.



SUNDAY

Sunday Morning's Adult Bible Study, 9:00 A.M.

We're studying various topics. Come find out what we're studying this Sunday at 9:00 A.M.

Sunday Morning Sunday School, 9:30 A.M.

TUESDAY

LifeLight Bible Study . . .

LifeLight Bible Study will resume in the fall.

Tuesday Evening Adult Bible Study. Pastor Sorensen is leading a Bible Study Tuesday evenings at 6:30 P.M., studying I Samuel.

— Come join us.

THURSDAY

Men's Thursday Morning Bible Study at Faith is held Thursdays at 9:00 A.M., studying the Armor of God.



God is the greatest Gift-Giver of all!

He gives us food 🍲 to eat and water to drink and offers
us unconditionally love ❤️, comfort, encouragement, and wisdom.
Most of all, He gives us the gift 📁 of eternal life through
His only Son, Jesus Christ. 🙏

Have you accepted God's gift 📁 of salvation?
Have you received any encouragement from His Word?
Have you found peace or comfort or joy in His love ❤️?

Freely you have received;
freely you are asked to give.

The Bible says a generous person will prosper and be blessed!
If you desire friendships that will bless your life,
then be a friend who gives herself away generously!



Be willing to listen when your friend is burdened.
Offer to make meals or clean the house for a friend in need.
Write notes of encouragement to a working friend who needs a lift.
Baby~sit for a friend so she can use the free time as she chooses.
Send a handmade gift 📁 or craft as an anonymous gift of blessing.
Take her flowers 🌸 for absolutely no reason at all!

🌸 And the list goes on... 🌸

Whatever you give,
give it generously as unto the Lord,
and give it with a smile!

The above writing is from the book "The Blessing of Friendship" by Karla Dornacher
www.karladornacher.com

Last Half of May 2025 and First Half of June 2025 Attendance and Offering Report

Date	Church	Communion	Offering
May 18	40	33	\$1,570.55
May 25	36	25	\$534.55
June 1	38	31	\$3,659.45
June 8	30	19	\$369.55
June 15	38	33	\$1,227.00

Subject: Newsletter Suggestions (5 W's)

When submitting articles for the monthly Newsletter please include the following:

Who (who is doing the event and who to ask questions or give suggestions to).

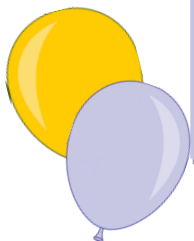
What.

When - date and times.
(Start and ending times) .

Where .

Why.

Volunteer needed?



July Anniversary
18 - Dave and Kathy Cook



July Birthdays

1 - Becky Daughety	18 - Katarina Bever
4 - Milo Johnson	24 - Tinley Doran
7 - Joann Feebeck	25 - Sherry Bishop
7 - Betty Muecke	27 - Jeff Dunekacke
12 - Jim Vosberg	28 - Colleen Miller
14 - Ethan Harms	29 - Pastor James T Sorensen



Pop Tabs

Join us in “Pulling for the Ronald McDonald House®”. When opening a can that has a pull tab, remove and collect the tab and give them to Ronald McDonald House Charities (RMHC)! Place the tabs in the RMHC box found on a shelf in the Fellowship Hall.

Why collect pop tabs? All the pop tab collections add up to make an impact for Ronald McDonald House Charities of Southern Colorado. An easy way to recycle, people of all ages can participate. RMHCSC receives funds when the aluminum tabs are recycled.

Summertime is the perfect time to cool down with a soft drink and help a family at RMHC's.

First Fruits for this month:
UNTIL FURTHER NOTICE we will again respond to
the items the **MISSION** currently needs –

**SPAGHETTI SAUCE, CANNED ONE-DISH MEALS, PEANUT BUTTER, JELLY,
TUNA PACKETS, RAMEN NOODLES,
CANNED FRUIT and/or PRE-PACKAGED FRUIT CUPS**

-- reflecting the need to feed those without cooking facilities --

Financial contributions are also welcome!

Please take contributions to their back door and knock to donate.

HOURS: Tuesday, Wednesday, Friday 11 a.m. until 1 p.m.

Remember to grab a couple jars/cans every time you go to the grocery store.



... and a big **thank you**
to **ALL** for your continued prayer support
and donations
— from all of us at the mission!



Upcoming Events at Faith Lutheran . . .



Dual Parish Potluck Picnic will be held Sunday July 27th.

No sign-up sheet. Each church will have their own service.

The picnic will start at 12:00 noon or as soon as possible.

Save the date and plan to help us celebrate!

See next page for map to Stew Brown Park in Mesa Antero.



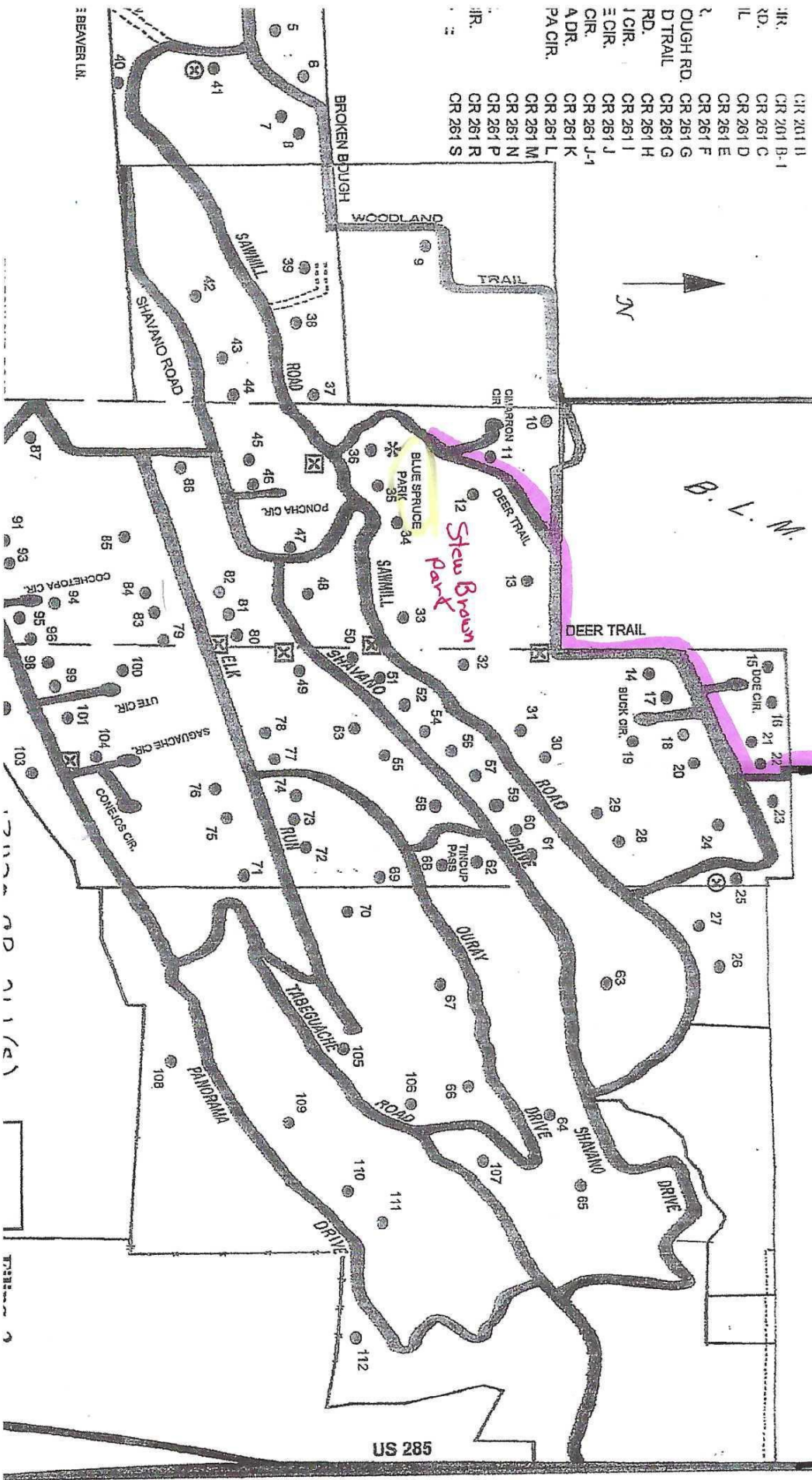
4th and 5th of July booth in the park – in need of volunteers. Please contact Cindy D. if you are willing to help.

July 20th : Lucky Finn Sunday honoring Tinley Doran.

Church Garage Sale will be held Saturday, August 9th.

Everyone can start bringing items for the sale starting July 26th.

- CR 201 B
- CR 201 B-1
- RD.
- CR 261 C
- CR 261 D
- CR 261 E
- CR 261 F
- CR 261 G
- CR 261 H
- CR 261 I
- CR 261 J
- CR 261 J-1
- A DR.
- CR 261 K
- CR 261 L
- CR 261 M
- CR 261 N
- CR 261 P
- CR 261 R
- CR 261 S
- CR 201 B
- CR 201 B-1
- RD.
- CR 261 C
- CR 261 D
- CR 261 E
- CR 261 F
- CR 261 G
- CR 261 H
- CR 261 I
- CR 261 J
- CR 261 J-1
- A DR.
- CR 261 K
- CR 261 L
- CR 261 M
- CR 261 N
- CR 261 P
- CR 261 R
- CR 261 S



272

271

270

W 51

US 285

Those Serving Us This Month

Communion Setup

Month of July - Marianne Kendall

Altar Flowers

July 6 - OPEN
July 13 - OPEN
July 20 - OPEN
July 27 - OPEN

Greeters

July 6 - Jerry Gallob
July 13 - Sherry Bishop
July 20 - Jerry Gallob
July 27 - Sherry Bishop

Ushers

July 6 - Ronnie and Sharon Carter
July 13 - Sharon and Ronnie Carter
July 20 - Ronnie and Sharon Carter
July 27 - Sharon and Ronnie Carter

Elders

Mark Brinkmann, Head Elder
Joel Tarcha
Bob Hickey

Reader

July 6 - Jana Schumann
July 13 - Colleen Miller
July 20 - Sherry Bishop
July 27 - Clare Tarcha

Cleaning the Sanctuary and the Basement

July 6 - 12 - Sharon and Ronnie Carter

Cleaning the Sanctuary and the Basement

July 20 - 26 - Natalie and Kim Roesler

Thank
You

Thank
You

Thank
You

From Sharon Carter, Stewardship Chair:

Please check your service date posted on the bulletin board by the main door of the church in the Narthex.

— **If not able to serve on that date, please find your own substitute.** —

The volunteer flower chart for this summer has many openings. Please continue to check the chart to see if you might be willing and able to bring flowers on any of those dates.

As always, thank you for your faithful service.

Stewardship Chair,
Sharon Carter

303-881-9840 sharoncarter00@gmail.com



Please submit your articles and other input for the
JULY Newsletter

to FLC's administrative assistant **ON OR BEFORE**

Tuesday, JULY 22ND, 2025



If you need to get in touch with one of the Elders, they have generously made their telephone numbers available . . .

Mark Brinkmann	661.444.7865
Joel Tarcha	970.819.8459
Bob Hickey	719.649.0403

FLC Office Hours: Pastor Sorensen's office hours at Faith are:
9:30 A.M. to 12 Noon Thursdays. Other times by appointment only.

Deadlines: Please make sure any information needing to be included in Sunday's **bulletins** is given to FLC Administrative Assistant by the **Thursday BEFORE that Sunday service**. If it is received after Wednesday, the information will then be included in the following Sunday's bulletin. Our bulletins can then be published in a timely manner.

WWW: Check out our presence on the world wide web!

Faith's webpage is at faithlutheranbv.org.

If you look in the links section, you will find that our Facebook page is linked there as well.

— Stop in and **KEEP IN TOUCH** —



Stephen Ministry

Look What God is Doing!

Hear about the surprising things that God is doing in Stephen Ministries.

By Connie Wright

Platitudes. They are overused, overly simplistic statements that are often said in an attempt to offer comfort or wisdom to someone. They are a “one-size-fits-all” statement that fits very few situations. An example is, “He’s in a better place.” Or, “God doesn’t give us more than we can handle.” ...We’ve all used them.

We might use platitudes during times of grief, disappointment, or personal struggle, as they can seem like quick and easy ways to provide reassurance when we don’t know what else to say in awkward or uncomfortable situations. Other times they are like Exit signs in buildings, and provide a safe, and quick way out.

Often times platitudes do more harm than good. Platitudes are broad, general statements of truth, but can sometimes come across as insincere or minimizing, as they often miss the true feelings and experiences of the person we’re talking to. They are usually more helpful to the speaker than to the receiver.

A mother whose young son died explains her feelings when she was told this platitude, God only takes the best. “How would you feel if one of your children died and my explanation and words of comfort were that your child was so good that they needed to pass away? We live as mortals on earth and part of this life is death. Some people live long lives, while others, like my son, pass away very early on in their life.”

Rather than platitudes, try using empathetic statements. These can help to validate the person's feelings, and offer specific support. The following are some supportive comments that will be more meaningful to someone who is hurting.

- I can see you're really upset about this.
- Is there something I can do to help you right now?
- I'm here for you no matter what.
- It's okay to feel upset. Your feelings are understandable.
- That sounds really tough. How are you feeling about it?"
- How are you coping with everything?
- That sounds really tough. I'm sorry you're going through this.

Should we never use platitudes again? No, they have a place in offering solace and mutual understanding, but if used insensitively, they might come off as dismissive or being misunderstood. Be sure you have listened and tried to understand the other’s feelings before offering a platitude. Then do so carefully.



Faith Lutheran Church is now a registered organization with the City Market Community Rewards program.

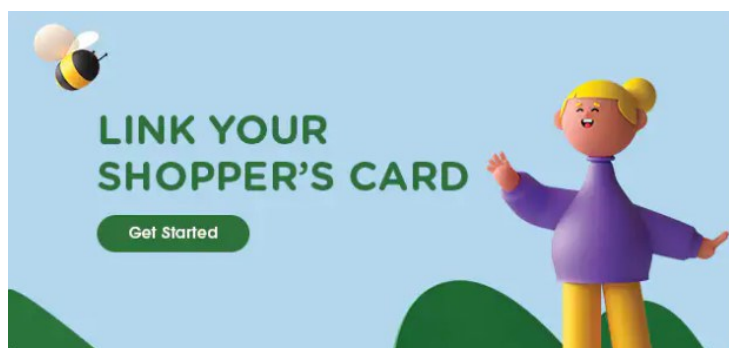
Simply by linking your City Market loyalty card, Faith will receive quarterly contributions with no cost to you.

Go to: www.citymarket.com/communityrewards (or www.citymarket.com)

Click on "Link Your Shopper's card". [see sample below]

Look for Faith Lutheran Church (Buena Vista) or CU397.

Any questions, comments, concerns or assistance requests please contact Chris.



July 2025

Sun	Mon	Tue	Wed	Thu	Fri	Sat
		1 Elders Meeting, 5:30 p.m. Adult Bible Study 6:30 p.m.	2	3 Men's Bible Study, 9 a.m.	4 	5
6 Bible Study 9:00 a.m. Sunday School 9:30 a.m. Sunday Service 10:30a.m.	7	8 Adult Bible Study 6:30 p.m.	9	10 Men's Bible Study, 9 a.m. Council Meeting 5:30 p.m.	11	12
13 Bible Study 9:00 a.m. Sunday School 9:30 a.m. Sunday Service 10:30a.m.	14	15 Adult Bible Study 6:30 p.m.	16	17 Men's Bible Study, 9 a.m.	18	19
20 Bible Study 9:00 a.m. Sunday School 9:30 a.m. Sunday Service 10:30a.m. Lucky Fin Sunday Honoring Tinley Doran	21	22 Adult Bible Study 6:30 p.m. DEADLINE for AUGUST Newsletter	23	24 Men's Bible Study, 9 a.m.	25	26
27 Bible Study 9:00 a.m. Sunday School 9:30 a.m. Sunday Service 10:30a.m. DUAL PARISH PICNIC following Worship Service	28 HAPPY BIRTHDAY, Pastor	29 Adult Bible Study 6:30 p.m.	30	31 Men's Bible Study, 9 a.m.		



In Our Prayers

Please keep Lisa's mom, **NANCY BJORNSTAD**, in your prayers. She was recently put on hospice. She is currently doing very well. She would love a visit or a card or a phone call from any of you.

Update on Lisa's daughter **MANDI**. Her second surgery went well and she is on a heavy-duty antibiotic to get rid of the infection. She had a PET scan which came back clear. We are very thankful for that. Her spirits are good, and she just wants to start her treatment. Please keep Mandi and the rest of the family in your prayers.

Please continue prayers for **LARRY HESPEL**, Marianne Kendall's brother. It's been determined that he has cancer. Further testing is being done.

GARY LONGWELL needs your prayer. He is in the hospital in Cheyenne Wells. He is having problems with his heart. Also, pray for Dar, Becky and Marcia as well, as this is hard for the whole family.

Please keep **JOEL TARCHA** in your prayers. Please pray for successful back surgery with no complications and for full healing. At time of printing, his surgery was scheduled for Thursday, June 12th.

**If you are sick or injured, please contact Pastor or one of the Elders,
so that we may visit and/or pray for you.
Pastor's cell: (402) 432-5090.**

Please e-mail prayer requests to: timjo@centurylink.net